

Liberal Area Coalition for Families works to make Southwest Kansas the best place to live and raise a family. Together with the communities we work in through *Pathways*, we are collaboratively making spaces that encourage play, promote healthy choices, and provide better accessibility to community resources.

Community Perception

Findings from the focus group regarding the play and splash pad project indicate:

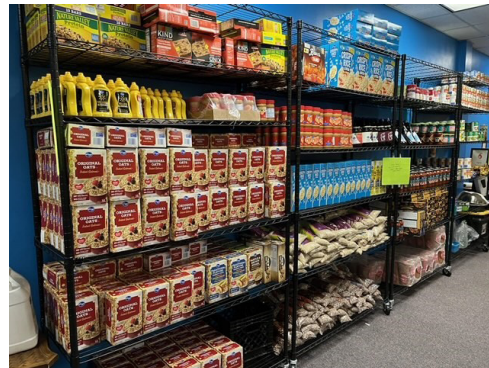
- The focus group emphasized the park space for its accessible play areas that incorporate safety, shaded seating options, and its role as an inclusive gathering spot for families, social groups, and individuals of all backgrounds.
- Focus group participants recommend marketing the Splash Pad through social media, library summer reading programs, grade-level back-to-school parties and highlighting it as a free, permanent improvement to the sports field area.
- The focus group expressed a desire to designate the Splash Pad as vape and tobacco-free. They also recommended signage for operation hours, contact information, and visitor directions.



“The Splash Pad will be a great addition to the parks in Hugoton. As a mom of three little ones, I look forward to this using this often!”

— Sarah Kitze
Hugoton Resident

Seward County



Healthy Eating

Liberal Childcare Learning Center creates cost-effective meals on site that meet KDHE standards. The *Pathways* grant bolsters the center’s ability to offer creative, nutritious food choices. Additionally, the grant supports the **acquisition of indoor active play equipment**, enabling children to engage in physical activity even during inclement SWKS weather conditions.

Active Living

Seward County Community College, partnering with *Pathways Initiative* and **LACF**, has built miles of trail on campus. The latest project includes a trail connection to dual purpose **Pickleball/ Tennis Courts**, providing students and the community with free outdoor recreation in a smoke-free area.

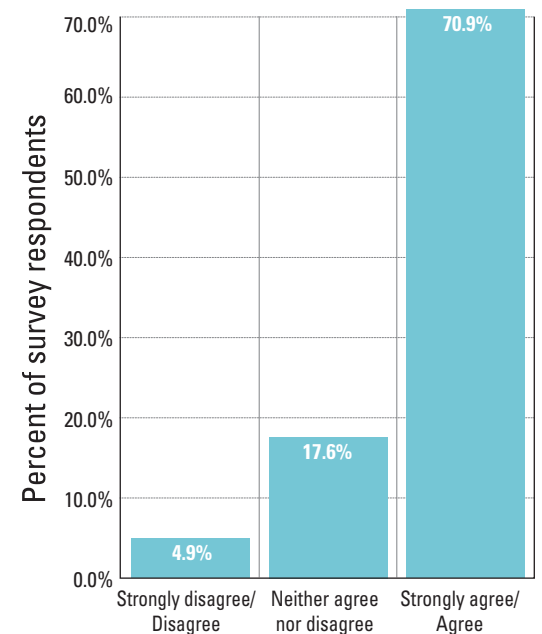


Commercial Tobacco Control



Liberal Childcare Learning Center has recently implemented a non-smoking policy that addresses not only smoking but also vaping. The policy highlights the health concerns associated with both secondhand and thirdhand smoke exposure for children. The center strictly enforces this non-smoking, vape-free policy for both parents and staff.

Initiative Wide: Community conditions (e.g. housing, transportation, education) impact overall health.



Key findings:

Seven-in-ten respondents across the 24 *Pathways* communities agree or strongly agree that community conditions such as housing, transportation and education impact overall health.

Results are based on data from an initiative-wide survey of Blue Cross and Blue Shield of Kansas members for whom e-mail addresses were available in each of the 26 counties in which BCBSKS has funded coalitions as part of the Pathways to a Healthy Kansas Initiative. N = 3,708. The survey response rate was 5.3 percent. For this question, 6.6 percent of respondents did not provide an answer (blank response).

6
Projects

\$192,000
Pathways Grant
Funding

\$150,000
In-Kind, Matching, and
Related Grant Funding

Pathways to a Healthy Kansas combines evidence-based solutions and promising practices for improving healthy eating, active living and tobacco prevention to make a large impact in communities. The program provides community coalitions with the tools and resources needed to remove barriers and engage their communities – and represents the largest community grant program ever funded by Blue Cross and Blue Shield of Kansas.

Blue Cross and Blue Shield of Kansas is an independent licensee of the Blue Cross Blue Shield Association. BLUE CROSS®, BLUE SHIELD® and the Cross and Shield Symbols are registered service marks of the Blue Cross Blue Shield Association, an association of independent Blue Cross and Blue Shield Plans. Liberal Area Coalition for Families is not affiliated with Blue Cross and Blue Shield of Kansas.



(620) 655-7177

lacfdirector@gmail.com

Facebook:

LiberalAreaCoalitionForFamilies